

6 From city to city

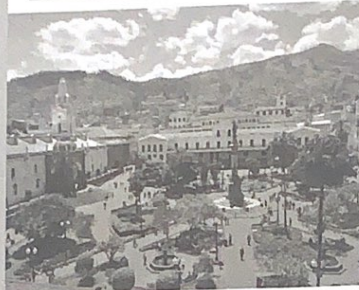
A Scan the webpage. Where is each city?

SEOUL

Seoul was founded in 18 BCE. It is South Korea's capital and today has a population of 10.5 million people. Seoul is famous for producing popular music and films that are very well known in Asia, Latin America, and the Middle East. The city is surrounded by mountains and located on the Han River. It has an excellent transportation system that can take you to 115 museums, monuments, parks, and music festivals throughout the city. The best time to visit Seoul is in the fall and the spring. Winters can be quite cold and summers very hot.



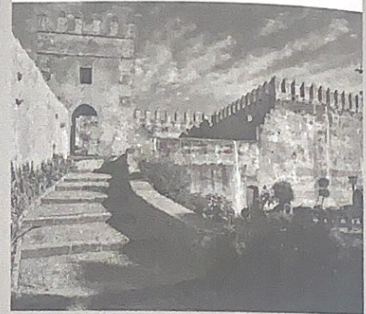
QUITO



Quito sits 2,850 meters above sea level and is the highest capital city in the world. Its population is 2.6 million people. The city is located near the equator in the country of Ecuador (which means "equator" in Spanish). Quito's downtown center, one of the most beautiful in the Americas, has not changed much since the Spanish founded the city in 1534. On a day trip from Quito, you can go walking in the mountains and visit a volcano there. Because of the city's elevation and location on the equator, the weather there is pleasant all year.

RABAT

Rabat is located on the Atlantic Ocean. It was founded in 1146. Although Rabat is the capital of Morocco, its population is only about 580,000 people. The weather is cool at night with hot days in the summer and mild days in the winter. Mawazine, a famous world music festival, takes place in Rabat in the spring. You can visit the Kasbah, an old fortress, and enjoy the architecture, gardens, and the view of the ocean. Rabat's outdoor markets sell beautiful handmade goods. Explore the city and enjoy a delicious Moroccan meal!



B Read the webpage and complete the chart.

City	Date founded	Population	Attractions
Seoul	18 BCE	10.5 million	museums, monuments, parks, and music festivals
Quito	1534	2.6 million	mountains and volcano
Rabat	1146	only about 580,000	kasbah, old fortress and enjoy the architecture, gardens and the view of the ocean.

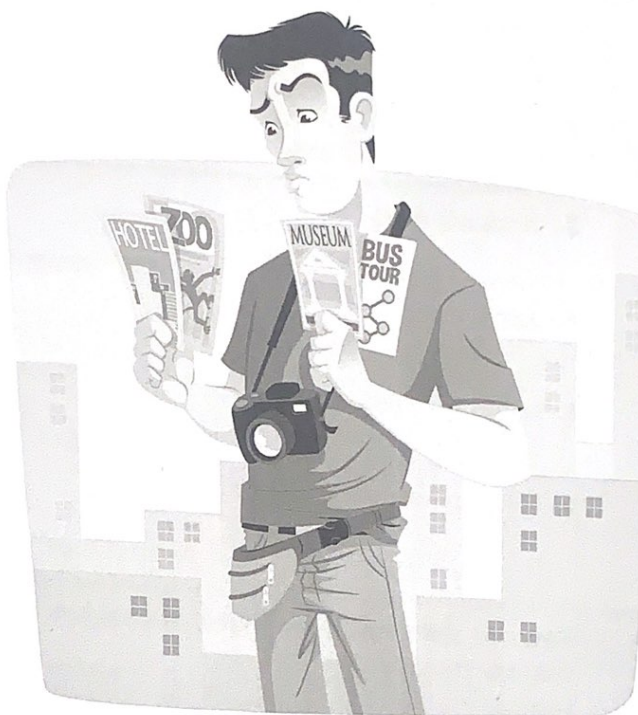
C Complete the sentences.

1. Seoul and Rabat have music festivals.
2. Rabat is the capital city with the smallest population.
3. Seoul is the oldest capital city.
4. Quito has the capital city with the highest altitude.

7 Complete the sentences. Use phrases from the box.

- | | |
|--|--|
| <input checked="" type="checkbox"/> shouldn't miss | <input checked="" type="checkbox"/> can take |
| <input checked="" type="checkbox"/> should see | <input checked="" type="checkbox"/> shouldn't stay |
| <input checked="" type="checkbox"/> can get | <input checked="" type="checkbox"/> shouldn't walk |

1. You should see the new zoo. It's very interesting.
2. You shouldn't stay near the airport. It's too noisy.
3. You shouldn't miss the museum. It has some new exhibits.
4. You can take a bus tour of the city if you like.
5. You shouldn't walk alone at night. It's too dangerous.
6. You can get a taxi if you're out late.



8 Complete the conversation with *should* or *shouldn't* and *I* or *you*.

A: I'm taking my vacation in Japan. What should I do there?

B: You shouldn't miss Kyoto, the old capital city. There are a lot of beautiful old buildings. For example, you should see the Ryoanji Temple.

A: Sounds great. Hakone is very popular, too. Should I go there?

B: Yes, you should. It's very interesting, and the hot springs are fantastic.

A: Should you take a lot of money with me?

B: No, you shouldn't. You can use the ATMs in Japan.

A: So when should I go there?

B: In the spring or the fall. You can see the cherry blossoms or the fall colors.

